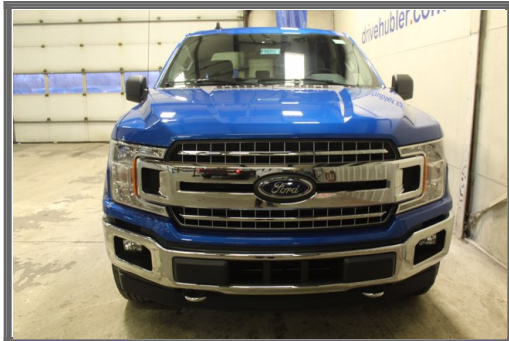


Hubler Auto Outlet

3800 South East St., Indianapolis, IN 46227

Phone: (317) 851-5721

2020 Ford F-150



Price: \$54,250

VIN: **1FTEW1E47LKD86950**

Stock No: **F10252**

Mileage: **4**

Exterior Color: **Velocity Blue Metallic**

Engine: **Twin Turbo Regular Unleaded V-6 3.5 L/213**

Interior Color: **Medium Earth Gray**

Transmission: **10-Speed Automatic w/OD**

Comments:

Heated Seats KEY FEATURES INCLUDE WiFi Hotspot, Apple CarPlay, Smart Device Integration. Onboard Communications System, Keyless Entry, Child Safety Locks, Steering Wheel Controls. OPTION PACKAGES EQUIPMENT GROUP 302A LUXURY XLT Chrome Appearance Package, 2 chrome front tow hooks, Single-Tip Chrome Exhaust, Tires: P275/65R18 OWL Automatic Transmission, Chrome Door & Tailgate Handles w/Body-Color Bezel, bezel on side doors and black on tailgate, Wheels: 18" Chrome-Like PVD, 2-Bar Style Grille w/Chrome 2 Minor Bars, silver painted surround and black background mesh, Chrome Step Bars, Leather-Wrapped Steering Wheel, 10-Way Power Driver & Passenger Seats, Rear Window Defroster, SiriusXM Radio, 7 speakers and 6-month prepaid subscription, Service is not available in Alaska and Hawaii, Subscriptions to all SiriusXM services are sold by SiriusXM after trial period, If you decide to continue service after your trial, the subscription plan you choose will automatically renew thereafter and you will be charged, ENGINE: 3.5L V6 ECOBOOST auto start-stop technology, GVWR: 7,000 lbs Payload Package, 3.31 Axle Ratio, XLT CHROME APPEARANCE PACKAGE 2 chrome front tow hooks, Single-Tip Chrome Exhaust, Tires: P275/65R18 OWL Automatic Transmission, Chrome Door & Tailgate Handles w/Body-Color Bezel, bezel on side doors and black on tailgate, Wheels: 18" Chrome-Like PVD, 2-Bar Style Grille w/Chrome 2 Minor Bars, silver painted surround and black background mesh, Chrome Step Bars, WHEELS: 20" CHROME-LIKE PVD, MAX TRAILER TOW PACKAGE max towing capability up to 13,200 lbs, and upgraded rear bumper, Pro Trailer Backup Assist, Auxiliary Transmission Oil Cooler, Integrated Trailer Brake Controller Pricing analysis performed on 6/2/2020. Horsepower calculations based on trim engine configuration. Fuel economy calculations based on original manufacturer data for trim engine configuration. Please confirm the accuracy of the included equipment by calling us prior to purchase.

Vehicle Features:

TRANSMISSION: ELECTRONIC 10-SPEED AUTOMATIC -inc: selectable drive modes: normal/tow-haul/snow-wet/EcoSelect/sport • Four Wheel Drive • Power Steering • ABS • 4-Wheel Disc Brakes • Brake Assist • Conventional Spare Tire • Tow Hooks • Intermittent Wipers • Variable Speed Intermittent Wipers • Daytime Running Lights • Automatic Headlights • AM/FM Stereo • Auxiliary Audio Input • Pass-Through Rear Seat • Rear Bench Seat • Adjustable Steering Wheel • A/C • Passenger Vanity Mirror • Engine Immobilizer • Stability Control • Front Side Air Bag • Tire Pressure Monitor • Driver Air Bag • Passenger Air Bag • Passenger Air Bag Sensor • Front Head Air Bag • Rear Head Air Bag • Child Safety Locks • Back-Up Camera

Dealership Information:

Hubler Auto Outlet
(317) 851-5721
3800 South East St.
Indianapolis, IN 46227